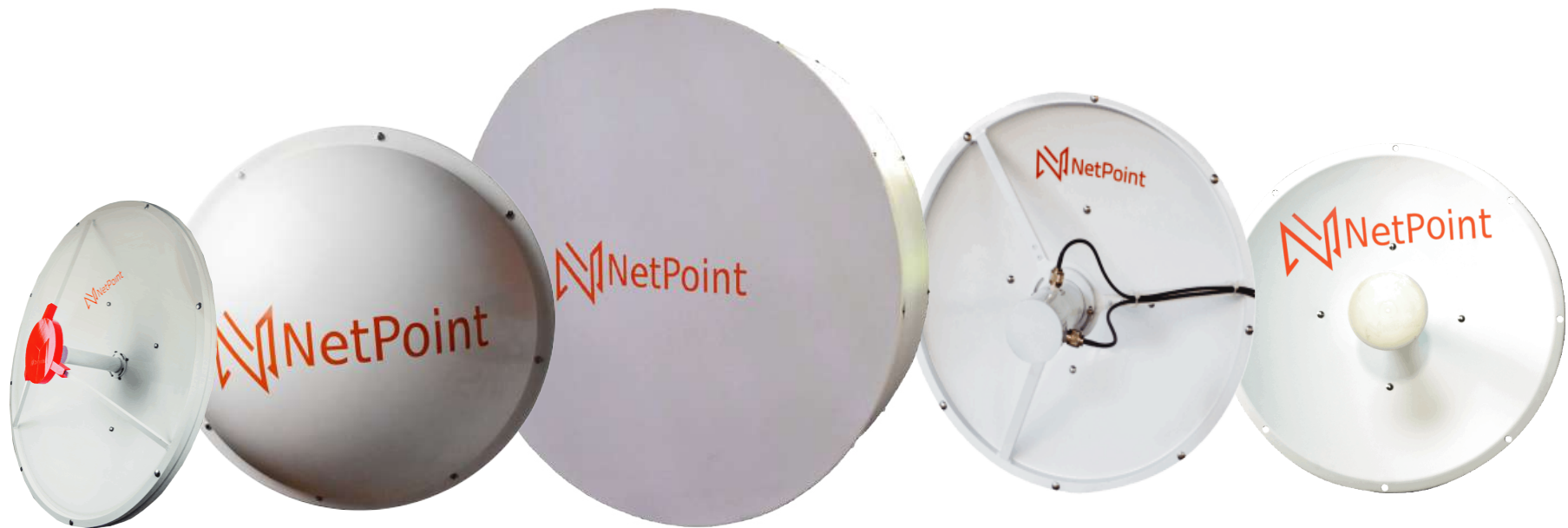




POINT-TO-POINT BACKHAUL ANTENNAS



Netpoint Antennas
Guadalajara, Mexico

Online
www.netpointantennas.com
info@antenas.com.mx

Phone No.
+52 1 33 1970 6753



Our Netpoint products are produced by Antennas de Jalisco, a 100% Mexican company with more than 50 years of experience in the manufacture of satellite dishes and antennas for radio communication and point-to-point backhaul links. We offer a wide range of antennas to compliment your telecommunication needs. Each of our antennas is designed and manufactured in our plant under the highest quality standards, the same that have distinguished and given us our prestige. We are a reliable antenna manufacturer and we are constantly innovating to offer our customers with state-of-the-art telecommunication solutions.



3GHz

NP33 Antenna

Netpoint NP33 antenna are high performance devices operating in the 3GHz frequency band. (PTP CBRS)

NP3330 Antenna

The NP3330 antenna is a high performance device operating in the 3GHz frequency band and is remarkable with its gain of 30dBi. It has dish size of 3ft. The NP3330 provides ISP customers with the appropriate capacity.

Part Number

NP3-DP-3FT

Frequency GHz

3.3 - 3.9

Item description

3-Foot Parabolic Antenna DP
3.3-3.9 GHz

Range

21.74 mi

Gain

30 dBi

Connector

type Female N
- N

Dish size

3 ft

Jumper

No



NP3326 Antenna

The NP3326 antenna is a high performance device operating in the 3GHz frequency band and is remarkable with its gain of 26dBi. It has a dish size of 2ft. The NP3326 provides ISP customers with the appropriate capacity.



Part Number	Frequency GHz
NP3-DP-2FT	3.3 - 3.9
Item description	Range
2-Foot Parabolic Antenna DP 3.3-3.9 GHz	12.42 mi
Gain	Connector type
26 dBi	Female N - N
Dish size	
2 ft	
Jumper	
No	

NP3334 Antenna

The NP3334 antenna is a high performance device operating in the 3GHz frequency band and is remarkable with its gain of 34 dBi. Its dish size is 4ft. The NP3334 provides ISP customers with the appropriate capacity.

Part Number

NP3-DP-4FT

Frequency GHz

3.3 - 3.9

Item description

4-Foot Parabolic Antenna DP
3.3-3.9 GHz

Range

31 mi

Gain

34 dBi

Connector

type Female N
- N

Dish size

4 ft

Jumper

No



A close-up photograph of a white, oval-shaped satellite dish antenna. The dish has a central feed horn and a transparent orange protective cover over the feed. The NetPoint logo is visible on the dish's surface. The background is blurred, showing an outdoor setting.

4GHz

NP45 Antenna

NetPoint NP45 antenna operate on 4 GHz frequency which is an ideal band for telephone operators and CCTV centres with carrier class solutions for hybrid backhaul links over short distances.

NP4526 Antenna

The NP4526 antenna is a high performance device operating in the 4GHz frequency band for up to 18 km backhaul links. It has a remarkable gain of 26 dBi with dish size of 2ft. The NP4526 is excellent for government video surveillance and call operations since these service run on a 4GHz frequency.

Part Number

NP4-DP-2FT

Frequency GHz

4.5 - 5.5

Item description

2-Foot Parabolic Antenna DP
4.5-5.5 GHz

Range

12.42 mi

Gain

26 dBi

Connector

type Female N
- N

Dish size

2 ft

Jumper

No



NP4530 Antenna

The NP4530 antenna is a high performance device operating in the 4GHz frequency band for up to 30 km backhaul links. It has a remarkable gain of 30 dBi with dish size of 3ft. The NP4530 is excellent for government video surveillance and call operations since these service run on a 5GHz frequency.

**Part Number**

NP4-DP-3FT

Frequency GHz

4.5 - 5.5

Item description

3-Foot Parabolic Antenna DP
4.5-5.5 GHz

Range

18.64 mi

Gain

30 dBi

Connector

type Female N
- N

Dish size

3 ft

Jumper

No

NP4534 Antenna

The NP4534 antenna is a high performance device operating in the 4GHz frequency band for up to (+) 50 km backhaul links. It has a remarkable gain of 34 dBi with dish size of 3ft. The NP4534 is excellent for government video surveillance and call operations since these service run on a 4GHz frequency.

Part Number

NP4-DP-4FT

Jumper

No

Item description

4-Foot Parabolic Antenna DP
4.5-5.5 GHz

Frequency GHz

4.5 - 5.5

Gain

34 dBi

Range

31 mi

Dish size

4 ft

Connector

type Female N
- N





5GHz

NPGEN2 Antennas for WISP

NetPoint NPGEN2 antennas are lightweight devices for backhaul links located on areas where there is less noise. NPGEN2 antennas are directional for more stable transmission of data.

NP1GEN2 Antenna

The NP1GEN2 antenna is a device for point-to-point backhaul links for optimal distances from 1 to 30 km. It is an N to N type connectorized antenna that includes N-SMA jumpers compatible with the Ubiquiti, Cambium Networks and Mimosa Networks brands.

Part Number

NP5-DP-2FT

Frequency GHz

4.9 - 6.4

Item description

2-Foot Parabolic Antenna DP
4.9-6.4 GHz 30 dBi includes pigtail
N-F to SMA M, radome optional

Range

15.53 mi

Connector type

Female N - N

Gain

30 dBi

Accessory

Compatibility

RAD60 - ARNP1

Dish size

2 Ft

Jumper

Yes



NP2GEN2 Antenna

The NP2GEN2 antenna is a device for point-to-point backhaul links for optimal distances from 1 to 70 km. It is an N to N type connectorized antenna that includes N-SMA jumpers compatible with the Ubiquiti, Cambium Networks and Mimosa Networks brands.

**Part Number**

NP5-DP-3FT

Frequency GHz

4.9 - 6.4

Item description

3-Foot Parabolic Antenna DP
4.9-6.4 GHz 3i includes pigtail N-F to
SMA M, radome optional

Range

31 mi

Connector type

Female N - N

Gain

34 dBi

Dish size

3 ft

Jumper

Yes

Accessory**Compatibility**

RAD60 - ARNP2



6GHz

NP6 Antennas for WISP

NetPoint NP6GEN2 antennas are lightweight devices for backhaul links located on areas where there is less noise. NPGEN2 antennas are directional for more stable transmission of data.

NP62 Antenna

The NetPoint NP6 Antenna is designed for connectorized backhaul or CPE installations. NP6 is compatible with Mimosa and Cambium radios with a frequency of 5.9 - 7.2 GHz. You can have the same quality service with a more affordable cost.

**Part Number**

NP6-DP-2FT

Frequency GHz

5.9 - 7.2

Item description

2-Foot Parabolic Antenna DP
5.9-7.2 GHz 30dBi includes pigtail N-F to
SMA M, radome optional

Range

19 mi

Connector type

Female N - N

Gain

30 dBi

Dish size

2 ft

Jumper

Yes

NP6 Antenna

The NetPoint NP6(NP63) Antenna is designed for connectorized backhaul or CPE installations. NP6 is compatible with Mimosa and Cambium radios with a frequency of 5.9 - 7.2 GHz. You can have the same quality service with a more affordable cost.

Part Number

NP6-DP-3FT

Frequency GHz

5.9 - 7.2

Item description

3-Foot Parabolic Antenna DP
5.9-7.2 GHz 32 dBi includes pigtail
N-F to SMA M and radome

Range

31 mi

Connector

type Female N

- N

Gain

32 dBi

Dish size

3 ft

Jumper

Yes



NP64 Antenna

The NetPoint NP6 Antenna is designed for connectorized backhaul or CPE installations. NP6 is compatible with Mimosa and Cambium radios with a frequency of 5.9 - 7.2 GHz. You can have the same quality service with a more affordable cost.

**Part Number**

NP6-DP-4FT

Frequency GHz

5.9 - 7.2

Item description

4-Foot Parabolic Antenna DP
5.9-7.2 GHz 30dBi includes pigtail N-F to
SMA M and radome

Range

50 mi

Connector type

Female N - N

Gain

36 dBi

Dish size

4 ft

Jumper

Yes

NP66 Antenna

The NetPoint NP6 Antenna is designed for connectorized backhaul or CPE installations. NP6 is compatible with Mimosa and Cambium radios with a frequency of 5.9 - 7.2 GHz. You can have the same quality service with a more affordable cost.

Part Number

NP6-DP-6FT

Frequency GHz

5.9 - 7.2

Item description

6-Foot Parabolic Antenna DP
5.9-7.2 GHz 32 dBi includes pigtail
N-F to SMA M and radome

Range

+50 mi

Connector

type Female N

- N

Gain

39.5 dBi

Dish size

6 ft

Jumper

Yes



A white, circular, horn-shaped antenna is mounted on a wooden beam. The antenna has the NetPoint logo in red on its side. It is connected to a white cable that runs along the beam. The background shows a light-colored wall and a wooden structure.

5GHz

NPPRO Twist-on- Antennas

Netpoint NPPRO antennas are designed for a highly demanding zero-loss backhaul links. Its twist-on mount makes it perfectly compatible with Mimosa C5X and B5X radios.

NPPROS Twist-on-Antenna

The NPPROS27 Twist-on-Antenna is a cost-effective solution for short backhaul links with a distance up to 15 km. It operates in the 5GHz frequency band and is remarkable with its gain of 27 dBi. Its dish size is 1ft. The NPPROS27 is compatible with Mimosa C5x & B5x.

Part Number

NPPRO5-S-DP-1FT

Item description

1.3-Foot Twist-on Parabolic Antenna DP 4.9-6.4 GHz

Gain

27 dBi

Dish size

1 ft

Jumper

No

Frequency GHz

4.9 - 6.4

Range

9.3 mi

Connector type

Twist-on-Antenna

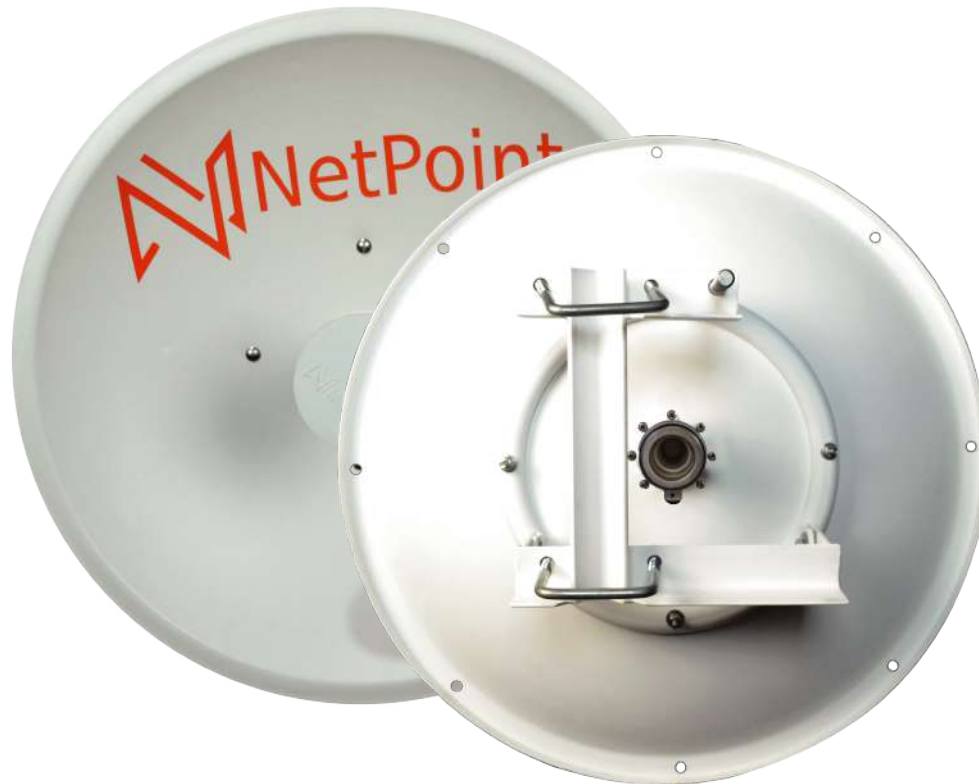
Accessory**Compatibility**

Mimosa C5x & B5x



NPPROS32 Twist-on-Antenna

The NPPROS32 Twist-on-Antenna is a high end device for backhaul links with a long distance up to 50 km. It operates in the 5GHz frequency band and is remarkable with its gain of 32 dBi. Its dish size is 3ft. The NPPROS32 is compatible with Mimosa C5x & B5x.

**Part Number**

NPPRO5-S-DP-3FT

Frequency GHz

4.9 - 6.4

Item description

3-Foot Twist-on Parabolic
Antenna DP 4.9-6.4 GHz

Range

31 mi

Gain

32 dBi

Connector type

Twis-on-Antenna

Dish size

3 ft

Accessory**Compatibility**

Mimosa C5x & B5x
Radome

Jumper

No

NPPROX32 Twist-on-Antenna

The NPPROX32 Twist-on-Antenna is a cost-effective solution for short backhaul links with a distance up to 60 km. It operates in the 5GHz frequency band and is remarkable with its gain of 32 dBi. Its dish size is 3ft. The NPPROX32 is compatible with Mimosa C5x & B5x.

Part Number

NPPRO5-SHP-3FT

Frequency GHz

4.9 - 6.4

Item description

3-Foot Twist-on Parabolic Antenna DP 4.9-6.4 GHz

Range

37 mi

Gain

32 dBi

Connector type

Twist-on-Antenna

Dish size

3 ft

Accessory**Compatibility**

Mimosa C5x & B5x

Jumper

No



NPPRO S36 Twist-on-Antenna

The NPPROS36 Twist-on-Antenna is a high end device for backhaul links with a long distance up to 120 km. It operates in the 5GHz frequency band and is remarkable with its gain of 36 dBi. Its dish size is 4ft. The NPPROS36 is compatible with Mimosa C5x & B5x.

**Part Number**

NPPRO5-S-HP-4FT

Frequency GHz

4.9 - 6.4

Item description

4-Foot Twist-on Parabolic
Antenna DP 4.9-6.4 GHz

Range

74 mi

Gain

36 dBi

Connector type

Twis-on-Antenna

Dish size

4 ft

Accessory**Compatibility**

Mimosa C5x & B5x
Radome

Jumper

No

NPTW-RV ADAPTER

The Netpoint NPTW-RV Adapter is an N-to-N connectorized twist-on-waveguide for NPRO and twist-on wave guide antennas.

**Part Number**

NPPRO5-ADP-C-NM

Frequency

4.9-6.4 GHz

Item description

Dual pole adapter for
connectorized dual
N-Male

Connector type

Female N - N

Accessory**Compatibility**

Dish NetPoint Twist-on

Jumper

No

Range

(+) 100 km

NPTW ADAPTER

The Netpoint TWNP Adapter is an N-to-N connectorized twist-on-waveguide for NPRO and twist-on wave guide antennas.

Part Number

NPPRO5-ADP-C-NM

Frequency

4.9-6.4 GHz

Item description

Dual pole adapter for connectorized dual N-Male

Connector type

Female N - N

Accessory**Compatibility**

Dish NetPoint Twist-on

Jumper

No

Range

(+) 100 km



5GHz

NPTR Antennas

Netpoint NPTR antennas are robust devices designed for marine environments backhaul links.

They are ideal for places with hurricane winds, high salinity and humidity. With its quality design, low maintenance is required.



NPTR1 Antenna

The NetPoint NPTR1 is a lightweight antenna for backhaul links on areas with high salinity and harsh environments that require equipment designed to endure weather adversities. It operates in the 6GHz frequency band and is remarkable with its gain of 30 dBi. Its dish size is 2ft. NPTR1 antenna is highly directive for better data transmission and carrier class type stability.

**Part Number**

NPTR5-DP-2FT

Jumper

Yes

Item description

2-Foot Parabolic Antenna DP
4.9-6.4 GHz 30 dBi Marine
Environment, includes radome
and pigtail N-F to SMA M

Frequency GHz

4.9 - 6.4

Range

18.64 mi

Gain

30 dBi

Connector type

Female N - N

Dish size

2 Ft

Accessory**Compatibility**

-Radome

NPTR2 Antenna

The NetPoint NPTR2 is a lightweight antenna for backhaul links on areas with high salinity and harsh environments that require equipment designed to endure weather adversities. It operates in the 6GHz frequency band and is remarkable with its gain of 34 dBi. Its dish size is 3ft. NPTR2 antenna is highly directive for better data transmission and carrier class type stability.

Part Number

NPTR5-DP-3FT

Jumper

Yes

Item description

3-Foot Parabolic Antenna
DP 4.9-6.4 GHz 34 dBi
Marine Environment; includes
Radome and Pigtail N-F to
SMA M

Frequency GHz

4.9 - 6.4

Range

31 mi

Connector type

Female N - N

Gain

34 dBi

Accessory**Compatibility -**

Radome



NPTR3 Antenna

The NetPoint NPTR3 is a lightweight antenna for backhaul links on areas with high salinity and harsh environments that require equipment designed to endure weather adversities. It operates in the 6GHz frequency band and is remarkable with its gain of 37 dBi. Its dish size is 4ft. NPTR3 antenna is highly directive for better data transmission and carrier class type stability.

**Part Number**

NPTR5-DP-4FT

Jumper

Yes

Item description

4-Foot Parabolic Antenna DP
4.9-6.4 GHz 37 dBi Marine
Environment, includes radome
and pigtail N-F to SMA M

Frequency GHz

4.9 - 6.4

Range

62.13 mi

Gain

37 dBi

Connector type

Female N - N

Dish size

4 Ft

Accessory**Compatibility**

-Radome

11GHz

NP11 High performance Antennas

Netpoint NPX are lightweight antennas designed for backhaul links located on areas with high interference.



NP11 Antenna

The NetPoint NP11 is a lightweight antenna for backhaul links located on areas with high interference. NP11 is highly directive for better megabyte transmission and carrier class stability. NP11 is an ideal antenna for backhaul links that run on 10 to 11 GHz licensed bands with a distance of up to 35 km. This is the best option for all carriers looking for a stable and data transfer where the 11 GHz band is unavailable.

**Part Number**

NPX5-HP-2FT

Jumper

Yes

Item description

2-Foot High Performance
Antenna DP 10.1-11.7 GHz
38 dBi, includes radome
and pigtail N-F to SMA M

Frequency GHz

10.1 - 11.7

Range

50 mi

Gain

38 dBi

Connector type

Female N - N

Dish size

2 Ft

5GHz

NPX High performance Antennas

Netpoint NPXGen3 are lightweight antennas designed for backhaul links located on areas with high interference.



NPX1GEN3 Antenna

The NetPoint NPX1GEN3 is a lightweight antenna for backhaul links located on areas with high interference. NPX1GEN3 is highly directive for better data transmission and carrier class stability. NPX1GEN3 is an ideal antenna for backhaul links with a distance of up to 30 km. Its dish size is 2ft.



Part Number	Jumper
NPX5-HP-2FT	Yes
Item description	Frequency GHz
2-Foot High Performance Antenna DP 4.9-6.4 GHz 30 dBi, includes radome and pigtail N-F to SMA M	4.9 - 6.4
Gain	Range
30 dBi	18.64 mi
Dish size	Connector type
2 Ft	Female N - N

NPX2GEN3 Antenna

The NetPoint NPX2GEN3 is a lightweight antenna for backhaul links located on areas with high interference. NPX2GEN3 is highly directive for better data transmission and carrier class stability. NPX2GEN3 is an ideal antenna for backhaul links with a distance of up to (+) 70 km. Its dish size is 3ft.



Part Number
NPX5-HP-3FT

Jumper
Yes

Item description
3-Foot High Performance
Antenna DP 4.9-6.4 GHz 34
dBi, includes radome and
pigtail N-F to SMA M

Frequency GHz
4.9 - 6.4

Range
43.49 mi

Gain
34 dBi

Connector type
Female N - N

Dish size
3 ft

NPX3GEN3 Antenna

The NetPoint NPX3GEN3 is a lightweight antenna for backhaul links located on areas with high interference.

NPX3GEN3 is highly directive for better megabyte transmission and carrier class stability . NPX3GEN3 is an Ideal antenna for backhaul links with a distance of up to (+) 100 km. Its dish size is 4ft.

Part Number

NPX5-SHP-4FT

Jumper

Yes

Item description

4-Foot High Performance
Antenna DP 4.9-6.4 GHz 37
dBi, includes radome and
pigtail N-F to SMA M

Frequency GHz

4.9 - 6.4

Range

62.13 mi

Gain

37 dBi

Connector type

Female N - N

Dish size

4 Ft



NPX4GEN3 Antenna

The NetPoint NPX4GEN3 is a lightweight antenna for backhaul links located on areas with high interference. NPX4GEN3 is highly directive for better data transmission and carrier class stability . NPX4GEN3 is an ideal antenna for backhaul links with a distance of up to (+) 120 km. Its dish size is 6ft.

Part Number

NPX5-SHP-6FT

Item description

6-Foot High Performance
Antenna DP 4.9-6.4 GHz 40
dBi, includes radome and
pigtail N-F to SMA M

Gain

40 dBi

Dish size

6 ft

Jumper

No

Frequency GHz

4.9 - 6.4

Range

105 mi

Connector type

Female N - N

Accessory

Compatibility

-Stiff arm





Accessories

Netpoint developed accessory products to protect the antennas from harsh environment. They are made of special materials to ensure that antennas are build to last for long period of time.

Armor NetPoint

The Armor Netpoint devices are designed to mitigate noise by giving depth to the antennas. It protects the antennas from inclement weather. Armor Netpoint is compatible with NPTR - NPGEN2 antennas.

ARNP1

Part Number : RDNPX-2FT

Dish Size : 2ft

Description: 2-Foot Replacement radome for NP5 antenna

ARNP1

Part Number : RDNPX-3FT

Dish Size : 3ft

Description: 3-Foot Replacement radome for NP5 antenna

ARNP1

Part Number : RDNPX-4FT

Dish Size : 4ft

Description: 4-Foot Replacement radome for NP5 antenna



Armor Ubiquiti

Armor Ubiquiti are devices specially designed to protect backhaul links from the noise of Ubiquiti 30 and 34 DBi antennas. It also protects the antennas from inclement weather.



UN30

Part Number : RDNPU-2FT

Dish Size : 3ft

Description: 2-Foot Radome for Ubiquiti RD-5G30

UN34

Part Number : RDNPU-3FT

Dish Size : 3ft

Description: 3-Foot Radome for
Ubiquiti AF-5G34-S45-US

Radome

Radome reduces wind load, protects reflector surfaces from harsh environment, wide range of temperature, direct sunlight and covers the antenna feed from falling objects thus extending the antenna's sustainability and operational life.

RAD60

Part Number : RDNP-2FT

Dish Size : 2ft

Description: 2-Foot Fiberglass radome for
NP5 & NPTR5 antennas

RAD100

Part Number : RDNP-3FT

Dish Size : 3ft

Description: 3-Foot Fiberglass radome for
NP5 & NPTR5 antennas

RAD120

Part Number : RDNP-4FT

Dish Size : 4ft

Description: 4-Foot Fiberglass radome for
NP5 & NPTR5 antennas





CONTACT US

For more information, please contact our sales team.

Tel. +52 1 33 1970 6753 | Tel. +52 1 33 3822 5161 | info@antenas.com.mx | netpointmexico.com

© NetPoint Antennas, All Rights Reserved.